

User environment

PC: Windows XP, Windows vista, Windows 7 and .NET Framework 3.5 above version.

Display:

- Use Force SA: AC off the display
- Not use Force SA: Enter Factory Mode>Option Setting and select RS232Host to GProbe

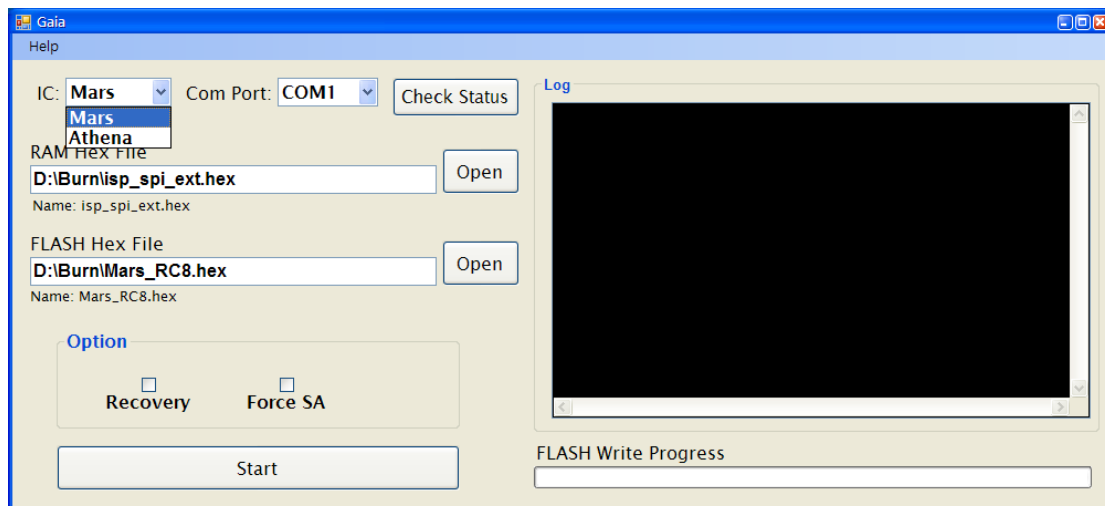
ScalerFWUpdateTool usage

Step 1: Open "Gaia.exe"

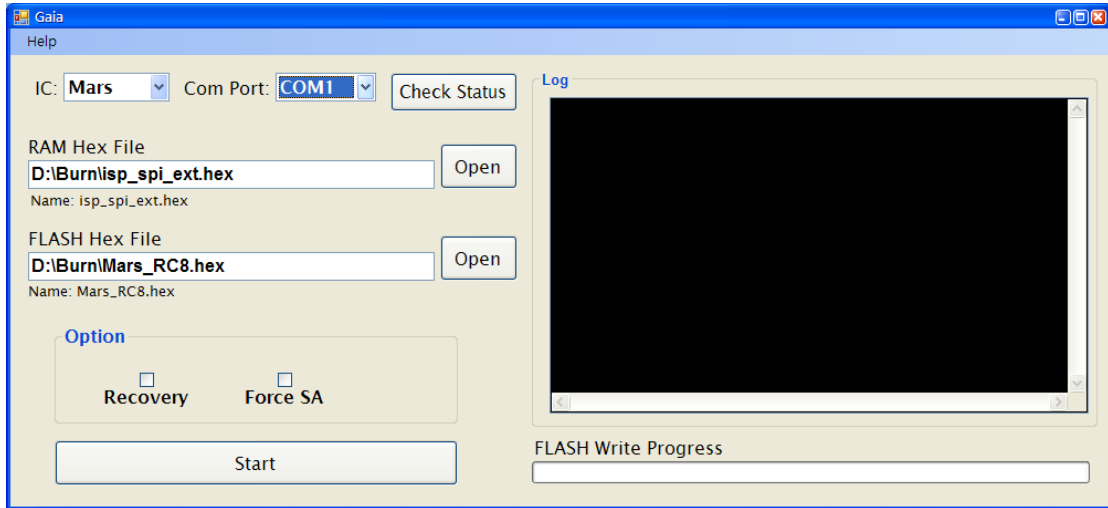
If you cannot open Gaia.exe directly, please select SetupScalerFWUpdateTool.msi to install Gaia. The Gaia.exe will be installed to C:\Program Files\QISDA\ScalerFWUpdateTool\Gaia.exe



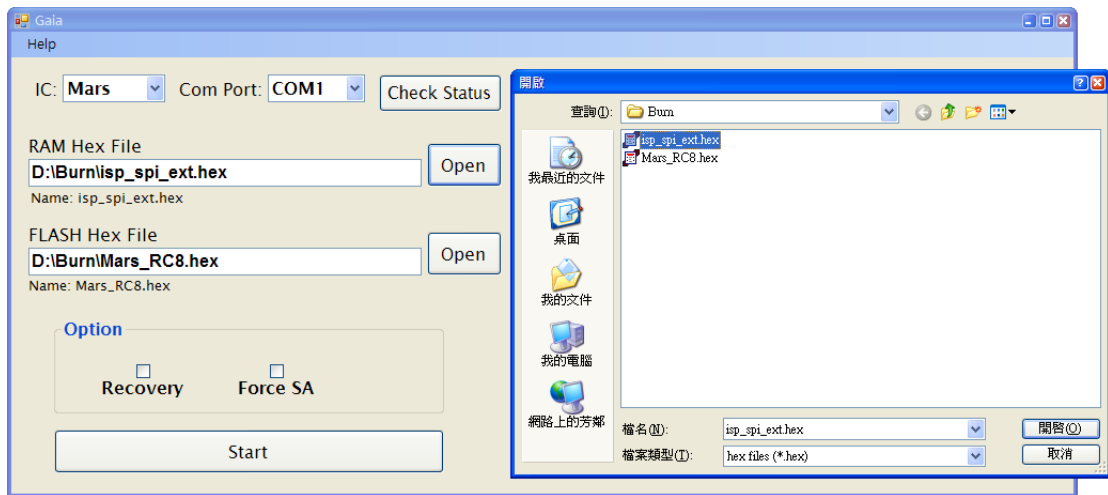
Step 2: Select the IC chip name which the main board used.



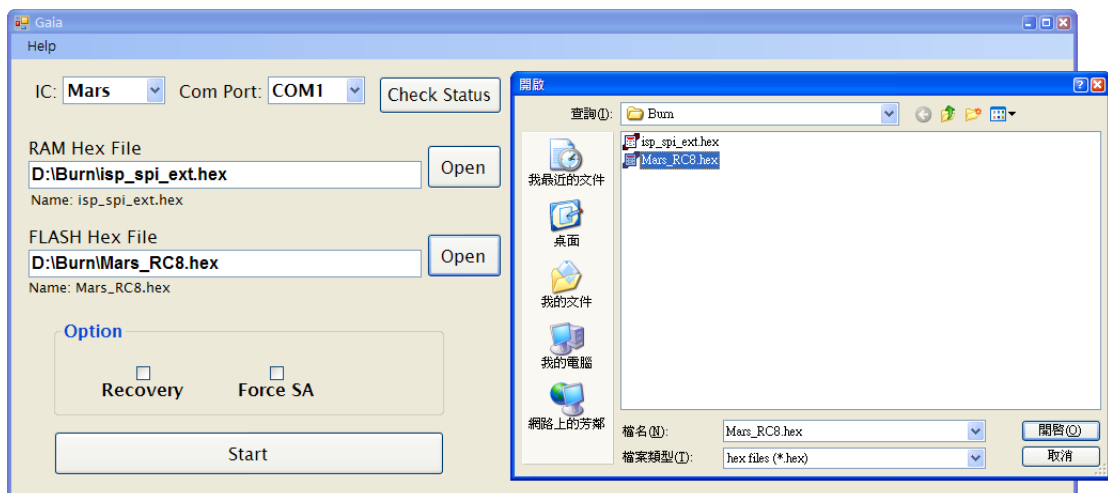
Step 3: Select the com port number which connect between PC and Display



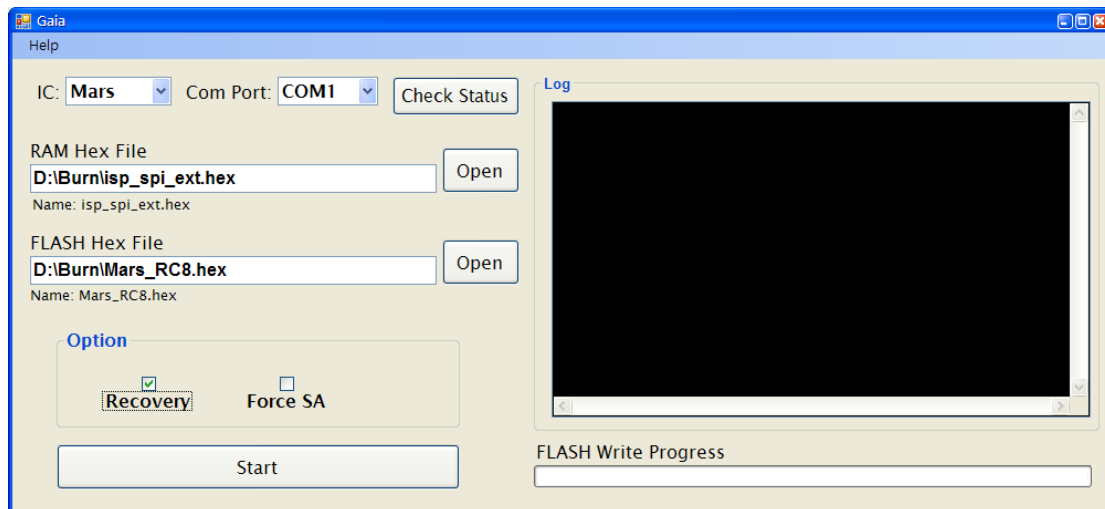
Step 4: Click RAM Hex File Open button to select Ram Hex File in PC



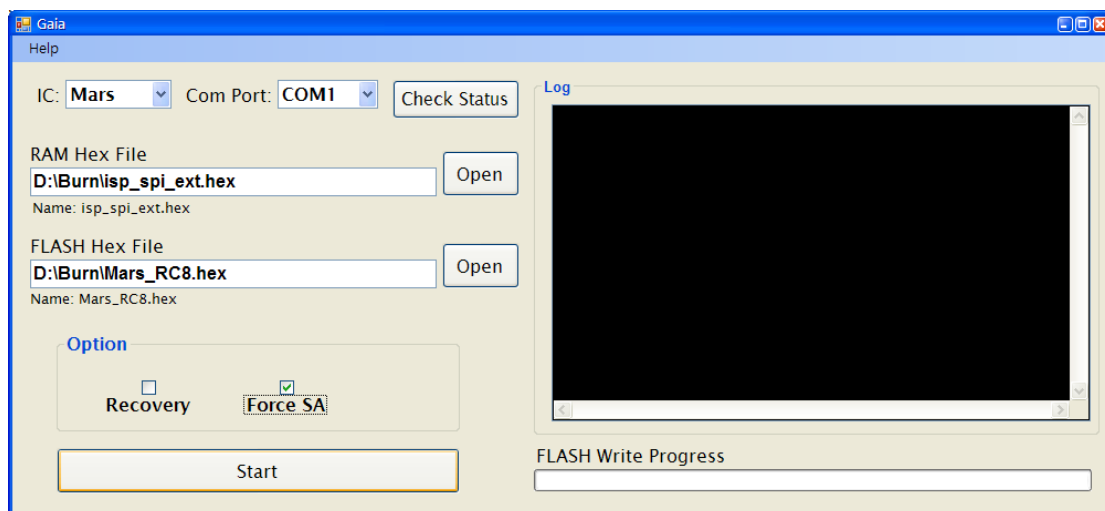
Step 5: Click FLASH Hex File Open button to select FLASH Hex File in PC



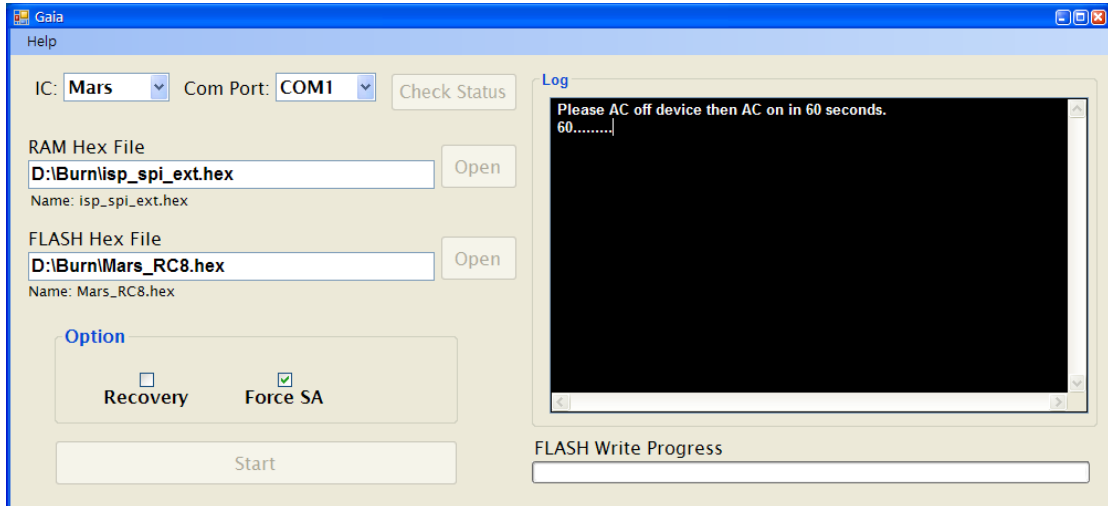
Step 6: If you need Recovery function, you can choose Recovery check box otherwise go to Step 7



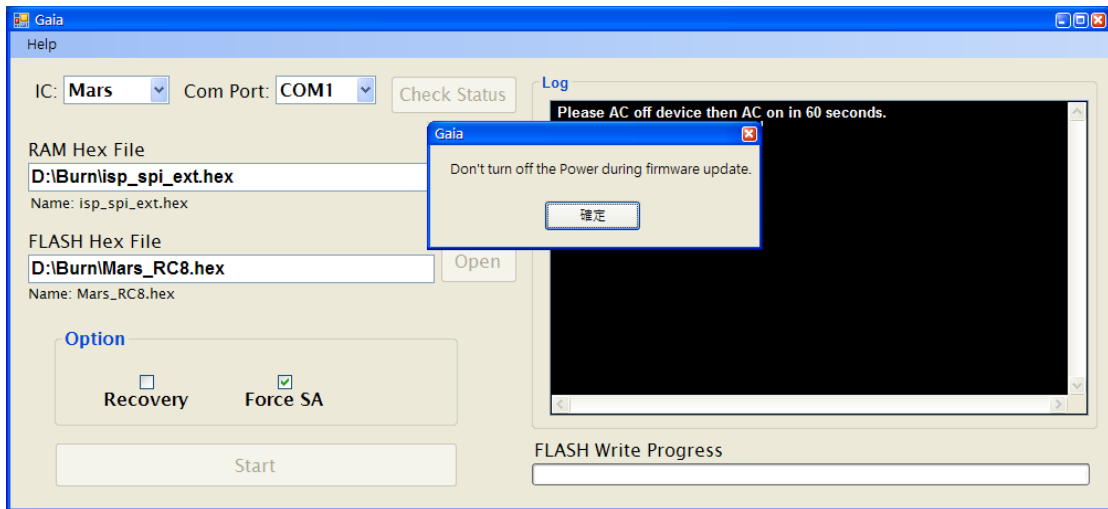
Step 7: If you want to use Force SA function, you can choose Force SA check box otherwise go to Step 8



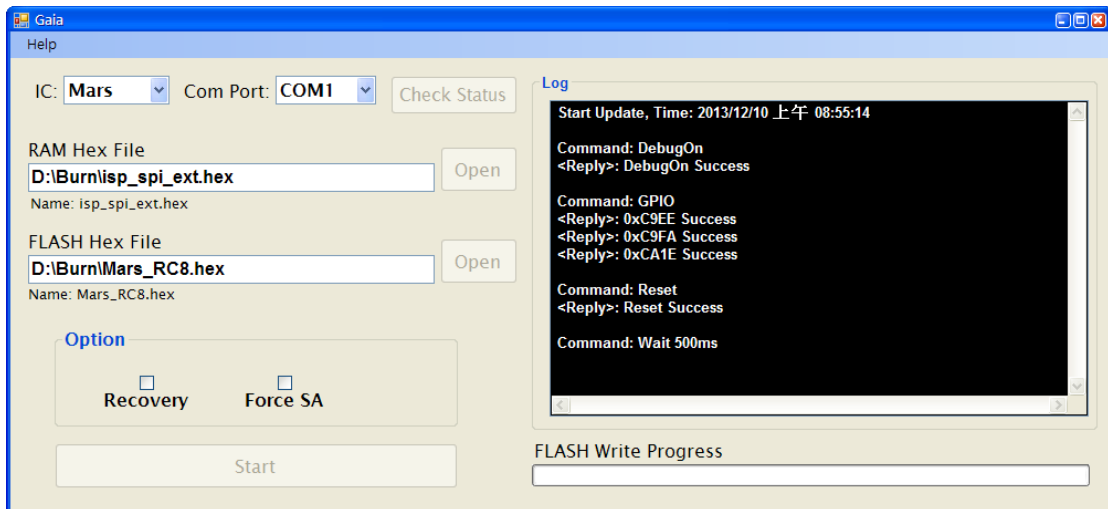
Step 8: Click Start button to update FW. The log will show the update status. If you use Force SA function, you need to AC off the display and wait few seconds (about 5 seconds) then AC on. After 6~15 minutes the FW update finished and will restart automatically.

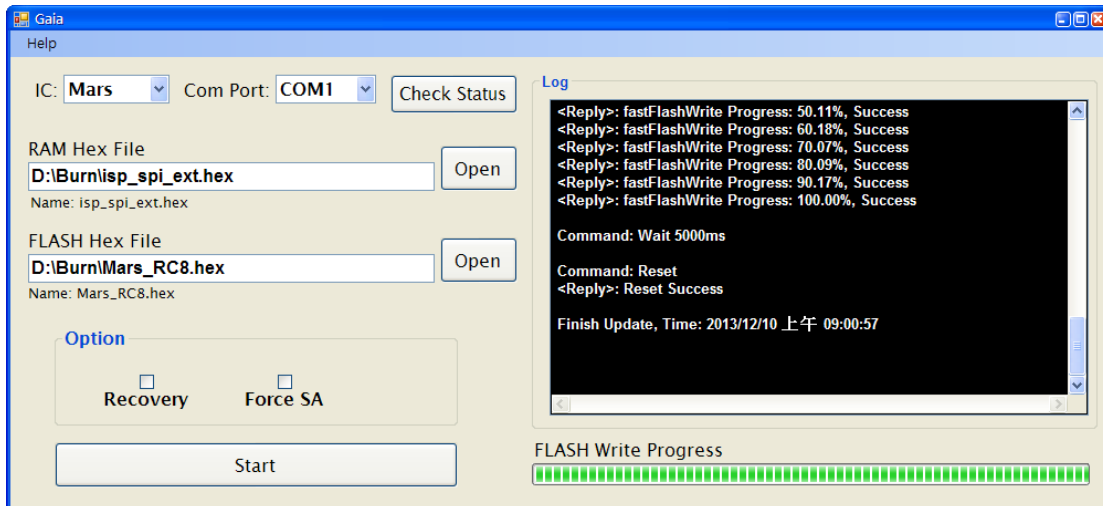


(Use Force SA function: AC off)



(Use Force SA function: AC on)



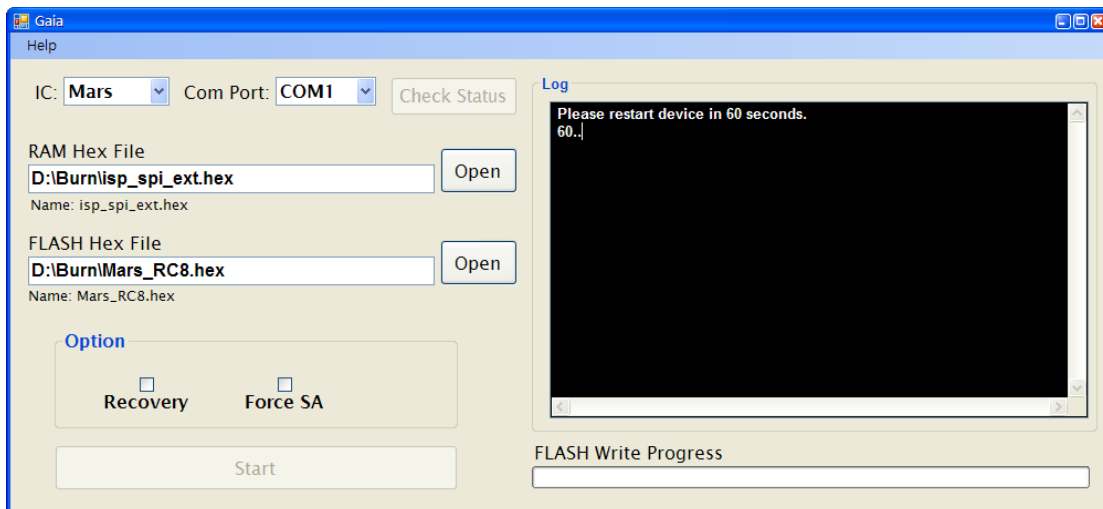


ScalerFWUpdateTool usage: Check Status

If you want to check FLASH code, you can press the Check Status button.

Step 1: AC off display

Step 2: Press Check Status button



Step 3: AC on display in 60 seconds. If the Flash has not code, It will show "IROM...".

