

C40 FW Update Guide

Before you update the C40 FW, please make sure the battery power is full. If FW update fail, it may make the machine dead. BenQ will not take the responsibility for this issue.

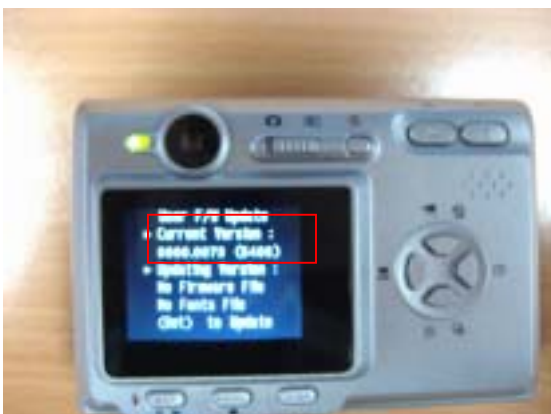
1. Please download the FW from Website.
2. Please charge the rechargeable battery to full, or change new AA Alkaline batteries.
3. Please turn off the camera first. Set the machine to “playback” mode.



4. Please check the current FW version in machine: Press “shutter + down key + Power “

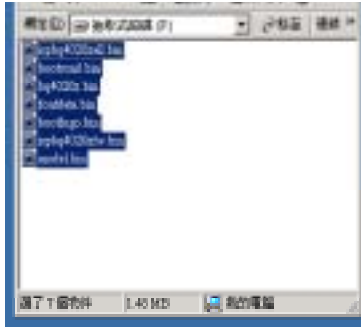


5. You can see the FW version in LCD; if the version is 0076 (71F9), please don't upgrade, the FW is the latest version, if not, please follow the below steps to update FW.



6. After checking FW version, please connect machine and PC by USB port. Now you can see a disk (mass storage) appear in “my computer”.

7. Please remove all files in mass storage. Copy the download files (*.bin) to root-directory of mass storage. (Ex: copy all *.bin files to F:\)



8. Remove the mass storage and take off the machine with PC. Restart the machine by Press “shutter + down key + Power “, than you can see the LCD appear “(Set) to update”, please press “set”. (Please make sure the battery power is enough)



9. You can see the LED glisten and have a list in LCD – xxx update OK, when the LCD turn off, please turn on the camera for test. (If you cannot turn on the camera, maybe the update fail, please connect with our service center.)



10. Turn off the camera, then press "shutter + down key + Power ", you can see the new FW in the LCD. – 0000.0076 (71F9)



11. OK, please remove the *.bin files in camera, the FW update process is finished.

If you don't understand the update process, please connect our service center. And please don't change FW file, it will make the FW update process fail.