

IFP - Interactive Flat Panel Series

KEY FEATURES



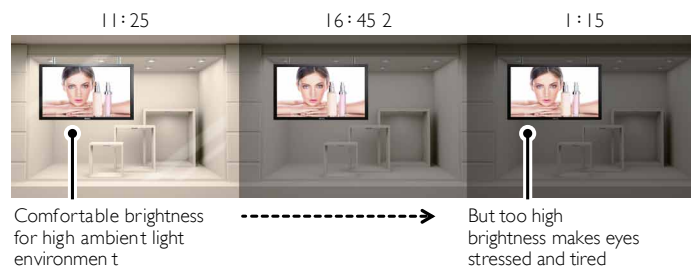
Optical Dual Touch Technology

The Optical Touch always gives responsive feedback with accurate positioning. You can touch the screen to pan, zoom and scroll images with two fingers through the Nextwindow™ technology. This eliminates the need for a mouse or keyboard, so you can operate education software or presentations like using a tablet to enjoy an engaging experience.



Ambient Light Sensor

Our environment doesn't always have the same ambient light, and so are our displays. For instance, the standard daytime brightness setting could be too strong for the afternoon or evening, resulting in sore eyes and fatigue. BenQ displays with ambient light sensors can automatically adjust brightness according to ambient light to make viewing more comfortable.



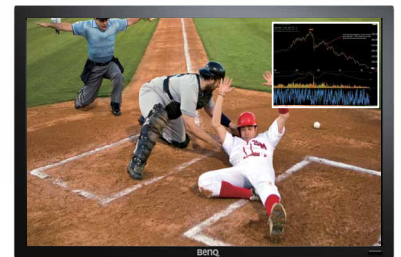
Anti-Image Retention

As screens displaying the same image for an extended period of time could have the "image sticking" problem, fortunately BenQ has an answer for it: the Anti-Image Retention feature randomly rotates each pixel on the screen with effects barely noticeable to the human eyes; this measure actively protects the display to make its service life even longer.



Picture in Picture (PIP)

The PIP (Picture-in-Picture) function enables BenQ displays to show images from two different video sources simultaneously, so you can take advantage of this feature to monitor one source while watching another, or use the embedded video to enrich your presentations. (Composite and S-video sources not supported)



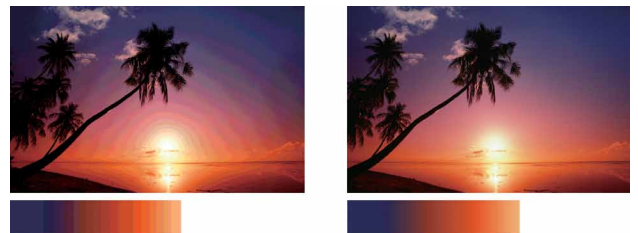
Internal Temperature Sensor

BenQ displays are made to last and save energy, yet self-diagnostics and protective measures are still featured for safety. The internal temperature sensors continuously register the thermal status of the displays and make appropriate adjustments to the system for better reliability and power efficiency in the entire lifecycle.



10-bit PID Panel

BenQ does not only save your bills with superior energy efficiency but also offers the best display performance. The PID (Public Information Display) panel is made for extended daily use while keeping uniform brightness, high reliability and superior durability as the vivid 10-bit color offers smooth, natural color transitions in gradients.



Interactive Flat Panel Series

Panel	Model	T420	TL550	T650
	LCD Size	42"	55"	65"
	Light Source	CCFL	Edge LED	CCFL
	TV/PID Panel	TV	TV	PID
	Active Area (mm)	930.24(H) x 523.26(V)	1209.6(H) x 680.4(V)	1428.48(H) x 803.52(V)
	Resolution	1920 x 1080	1920 x 1080	1920 x 1080
	Aspect Ratio	16:9	16:9	16:9
	Brightness (typ)	440 nits	350 nits	440 nits
	Native Contrast Ratio (typ)	1500:1	4000:1	5000:1
	Dynamic Contrast Ratio (DCR)	4000:1	10000:1	9,000:1
	Response Time (ms)	5 ms	6.5 ms	8 ms
	Pixel Pitch (HxW)	0.48 x 0.48 mm	0.63 x 0.63 mm	0.74 x 0.74 mm
	Frame Rate	60Hz	120Hz	60Hz
	Viewing Angle	178 degree (H) / 178 degree (V)	178 degree (H) / 178 degree (V)	178 degree (H) / 178 degree (V)
	Light Life (typ/min)	60,000 hrs (typ.)	30,000 hrs (min.)	50,000 hrs (min.)
	Color Gamut (x% NTSC)	72%	72%	72%
	Panel Bit (8 or 10)	8bit+FRC (1073.7M)	8bit+FRC (1073.7M)	8bit+FRC (1073.7M)
Touch	Technology	Support single touch for Window XP, Window Vista, Mac ,Dual touch for Window 7		
	Resolution (points area function)	32767 x 32767	32767 x 32767	32767 x 32767
	Capacity	2 simultaneous touches	2 simultaneous touches	2 simultaneous touches
	Accuracy	+/- 5mm over 95% of touchable area	+/- 5mm over 95% of touchable area	+/- 5mm over 95% of touchable area
	Touch Output	USB 2.0	USB 2.0	USB 2.0
Environment	PC	Support single touch for Window XP, Window Vista, Mac ,Dual touch for Window 7		
	Operation Temp (dC)	0°C ~ 40°C	0°C ~ 40°C	0°C ~ 40°C
	Storage Temp (dC)	-20°C ~ 60°C	-20°C ~ 60°C	-20°C ~ 60°C
	Usage (hrs/days)	8 hours / 7 days	8 hours / 7 days	24 hours / 7 days
Audio	Audio W (Amp)	12W x 2	12W x 2	12W x 2
	Internal Speaker	12W x 2	12W x 2	12W x 2
I/O Connection	Line in	Yes	Yes	Yes
	Power (AC) Input / Output	Yes	Yes	Yes
	Power Switch	Yes	Yes	Yes
	Audio Output (L / R, RCA)	Yes	Yes	Yes
	External Speaker Out (L/R)	Yes	Yes	Yes
	Audio Input (L/R)	Yes x (2 sets input)	Yes x (2 sets input)	Yes x (2 sets input)
	HDMI In	Yes	Yes	Yes
	DVI Input / Output	Yes / No	Yes / No	Yes
	VGA In / Out	Yes	Yes	Yes
	USB (Touch to External PC)	Yes	Yes	Yes
	RS232 Input / Output	Yes	Yes	Yes
	Component In (YPbPr, RCA)	Yes	Yes	Yes
	S-Video In	Yes	Yes	Yes
Composite video In/Out (BNC)	Yes	Yes	Yes	
Mechanical	Weight (with/without packaging)	30.5 / 32.5 kg	42.4 / 48.4 kg	71 / 86
	Dimension (W x H x D)	992 x 585 x 128.9 mm	1262.4 x 748.5 x 87 mm	1522 x 899 x 146 mm
	Bezel Width (T / B / L / R)	29.3 / 29.3 / 29.3 / 29.3 mm	40 / 24.9 / 24.9 / 24.9 mm	42 / 39.3 / 44.8 / 44.8 mm
	Wall Mounting	4 Holes (400 x 200mm)	4 Holes (400 x 200mm)	8 Holes (400 x 400mm)
	OPS Slot	No	No	Yes
Package / Accessory	Remote Controller • PWR Cord (By Region) • VGA Cable • Quick Start Guide • User's Manual CD			
Power	Voltage	100 V ~ 240 V, 50 / 60Hz	100 V ~ 240 V, 50 / 60Hz	100 V ~ 240 V, 50 / 60Hz
	Maximum (Watt)	<210W	<185W	<550W
	Standby (Watt)	<0.5W	<0.5W	<0.5W
	Power Off (Watt)	<0.5W	<0.5W	<0.5W
Feature	Image Setting • Source / Volume Control • VGA Daisy Chain • RS232 Control Daisy Chain • ID Setting • Sharpness Enhancement • Proof of Image Retention • Diming Control (DCR) • Picture in Picture (PIP) • De-Interlacing / Comb Filter • 10 Bit color processing • Build-in Video Wall Support Scheduling • Ambient Light Sensor • Total turn-on time • Diagnostic DC voltage (12v/5v) • Internal Temperature Sensor			
	Warranty	3 years parts & labor	3 years parts & labor	3 years parts & labor
	UPC code	8400460-2602-8	8400460-2601-1	8400460-2418-5

- ① AUDIO IN (AUDIO1)
- ② AUDIO OUT(R/L)
- ③ SPEAKERS(R/L)
- ④ AUDIO IN(AUDIO2/AUDIO3)
- ⑤ VIDEO IN(HDMI)
- ⑥ VIDEO IN(DVD-D)
- ⑦ VGA IN
- ⑧ VGA OUT
- ⑨ RS232C IN/OUT
- ⑩ VIDEO IN(COMPONENT)
- ⑪ VIDEO IN(3-VIDEO IN)
- ⑫ VIDEO IN
- ⑬ VIDEO OUT
- ⑭ AC SWITCH ON/OFF
- ⑮ AC IN
- ⑯ AC OUT

